

Therapy Care

USER'S MANUAL AND QUICK GUIDE

INDEX

Introduction to Therapy Care.....	02
First steps	03
• Equipment installation.....	03
Use of Equipment.....	04
• Start up.....	04
• Selection of temperaturas.....	04
• Selection of the type of Treatment.....	04
• Selection of treatment parameters.....	04
• Start Treatment.....	04
Data on the screen (Performing treatment).....	05
• Heat and cold temperatura.....	05
• Total contrasts / Number Current contrasts.....	05
• Total heat time / Heat remaining time.....	05
• Total cold time / Remaining cold time.....	05
• Total time of treatment / Remaining time of treatment.....	06
• Active compression level selected.....	06
• Compression frequency level selected.....	06
• Therapy applying cold.....	06
• Therapy applying Heat.....	06
• Therapy emptying exchangers.....	06
• Go back.....	06
• Therapy in preparation / Ready.....	06
• Completed Treatment.....	06
Technical Mode.....	07
• Configuration Menu.....	07
• Modify language.....	07
• Recharge and emptying deposits.....	07
Technical characteristics.....	08
Problem resolution.....	09
• Alarm / indication of low fluid level.....	09
• The equipment does not turn on normally.....	09
• The equipment does not respond to the keys on the screen.....	10
Contraindications and precautions.....	10
Cleaning and maintenance.....	11
Cleaning of the Equipment.....	11
Cleaning of the exchangers.....	11
Preventive maintenance.....	11
Equipment transportation.....	11
Replenishment fluid.....	11
Maintenance contract.....	12
Deposit emptying.....	12
Warranty.....	13
Manufacturer and Technical Service.....	13
Data sheet.....	14
Declaration of conformity	

INTRODUCTION TO THERAPY CARE

ARB Systems Proyectos Electrónicos SL, founded in 2006, is a company dedicated to research, development and innovation, as well as manufacturing in the sectors of biotechnology, electro medicine and advanced medical and aesthetic equipment.

Therapy Care is a piece of high technology equipment, designed for the application of thermal contrasts, cold applications and heat applications.

Therapy Care, helps you recover your physical form, better and faster and does so by enhancing the natural mechanisms of the organism, using the power of thermal contrasts, heat applications and cold applications, combined with the application of hydraulic sequential compressions .

Hydraulic compression applications help adapt the exchanger to the work area by increasing contact.

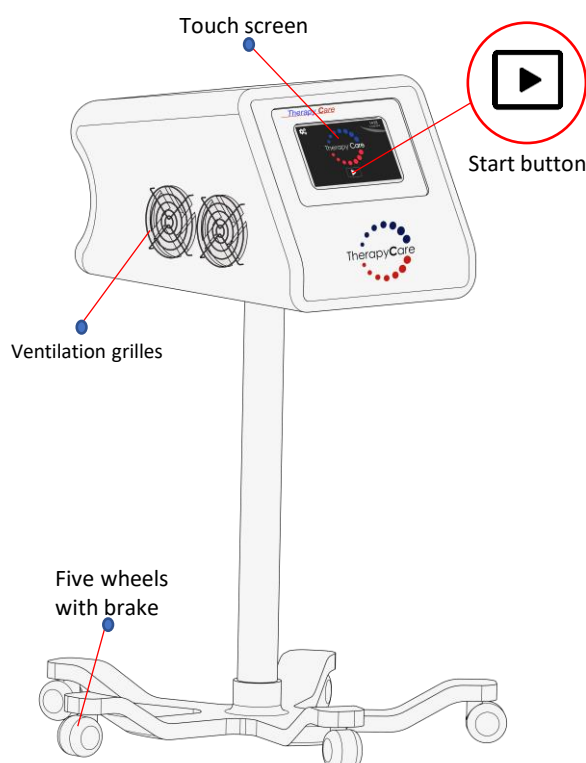
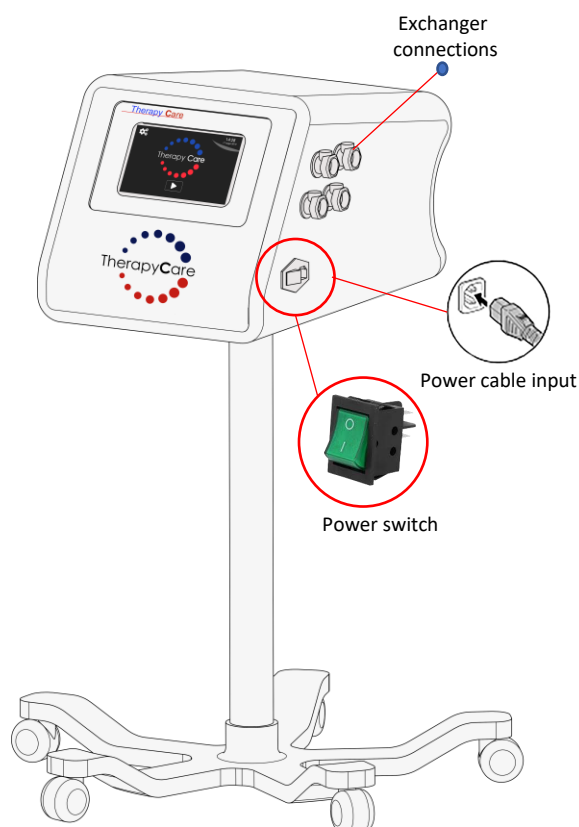
IMPORTANT: For the optimal operation of the equipment, when working with a single exchanger, connect **jumper A** to the free outlet according to the photograph.



Therapy Care is not a medical device.

The use of thermal contrasts treatments, cold only or heat only, for the realization of physiotherapy or rehabilitation treatments, will always be carried out under the supervision of qualified health personnel.

ILLUSTRATIONS



FIRST STEPS

EQUIPMENT INSTALLATION

1.- Install the equipment in a suitable place:

- Therapy Care is designed to work indoors only.
- Install it in a dry place.
- Leave the ventilation grills free.
- Install it near an outlet of at least **10 A**.
- Install the equipment in its original support or, failing that, on a table or firm surface at a floor height of at least 65 cm.

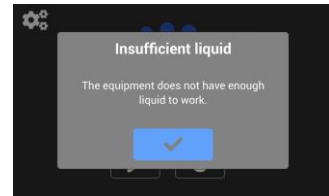
IMPORTANT: Never place the equipment on one of its sides, that would cause damage to the equipment and invalidate the warranty


2.- Turning on the equipment:

- Once the equipment is installed and plugged into an outlet.
- Press the green power button on the equipment (**Power Switch**).
- Wait for the equipment to boot alone and load the application.
- If this is the first time, you will receive the alarm / warning of **"Insufficient liquid"**
- Proceed to deposit filling.

3.- Filling deposits:

- **Amount of fluid per tank: 1.5 l. x 2 Total 3l.**
- The equipment is delivered with empty tanks, (**Whenever the equipment is to be transported, the tanks must be emptied, see cleaning and maintenance section**).
- Use only the fluid provided by the manufacturer, the use of any other fluid could damage the equipment and invalidate the warranty.
- If, **after turning on the equipment, it shows us the following message on the screen:** "insufficient liquid", we must proceed to fill the tanks.



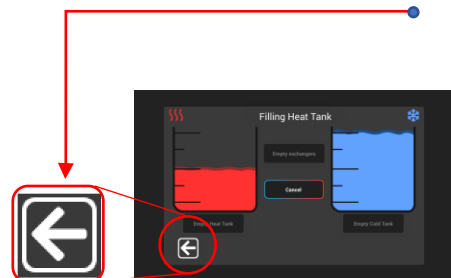
- Press the check button. 
- Then the filling screen appears.
- Connect the filling tube to the equipment according to the picture.



- Press "Automatic deposit filling".

Automatic filling

- The equipment proceeds to fill the deposits automatically, until the filling is completed.
- Press the "left arrow" exit button to use the equipment normally.



4.- Equipment ready to work:

- Once the deposit filling process is complete, the equipment does not need anything else to start work, it is ready to start the treatments.

IMPORTANT: Do not start the treatment if the exchangers are not placed in the user. To enable the massage function, do not overtighten the exchangers on the user.

USE OF THE EQUIPMENT

Default values: The equipment takes as default values, both temperature, treatment times, compression levels, the last treatment performed.

Start up

1.- Press the power switch.



2.- Press "Start" to start preparing temperatures. 




Temperature selection

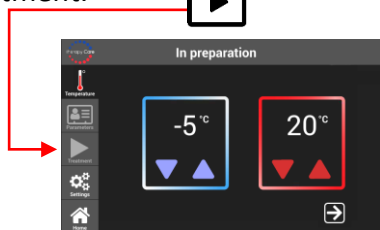
1.- Select hot fluid temperature: from 20 to 45°C.



2.- Select cold fluid temperature: from 20 to -5°C.



3.- Press Continue, stop selecting the type of treatment. 



Treatment type selection



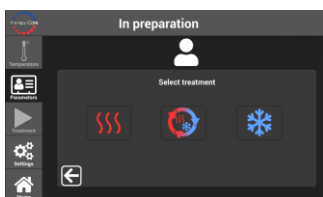
HEAT



CONTRAST



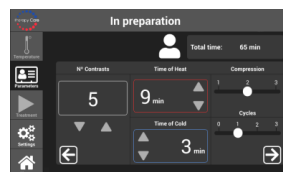
COLD



Selection of treatment parameters

1.- Select the number of contrasts, (from 1 to 50): (Only if you have selected treatment with thermal contrasts).

2.- Select the heat application time: from 1 to 59 min: (Only if you have selected treatment with thermal contrasts or heat-only treatment).



3.- Select the time of cold applications: from 1 to 59 min: (Only if you have selected treatment with thermal contrasts or cold only treatment).

3 A.- In order optimize the performance of the equipment, in contrast treatments, select a value between 5 and 59 min as the duration of the "Heat time" and the duration of the "Cold time"

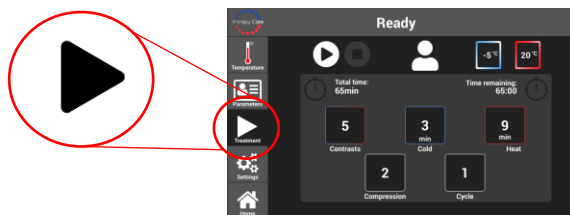
4.- Selection of the parameters of active compression massage:

- 4.1.- Select the intensity of compression, (1, 2, or 3)
- 4.2.- Select the frequency of compressions, (0, 1, 2, or 3):
(0 is without compressions)

During the preparation the indication: "THERAPY IN PREPARATION" is visible

Start treatment

Once the indication of "THERAPY PREPARED" appears

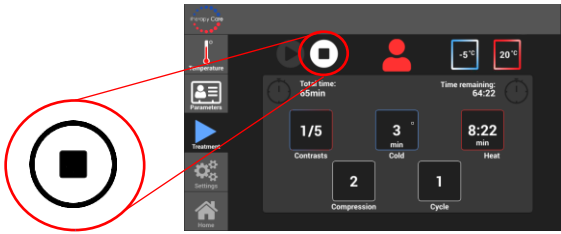


Press: "Start treatment"

Note: If you select -5°C cold fluid temperature, the application temperature is around 0°C

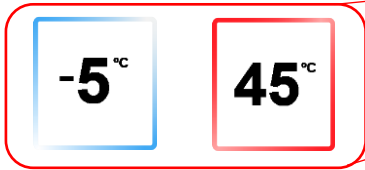
Cancel treatment

If the **“Cancel treatment”** key is pressed, the treatment will be interrupted, the emptying of the exchangers will begin and the treatment type Selection screen will be returned and the equipment will continue to prepare with the default temperatures.

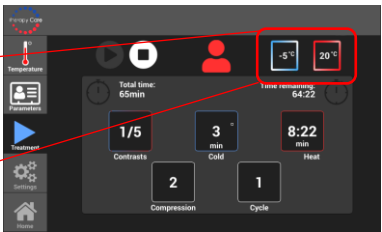


Performing treatment

Heat and Cold Temperature



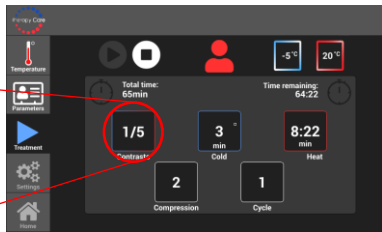
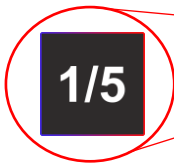
Data that appears on the screen



At any time the heat or cold temperature can be modified and the equipment will begin the process of adapting the temperatures to the new ones selected

Total contrasts / No. Current contrasts

Only if contrast treatment has been selected.



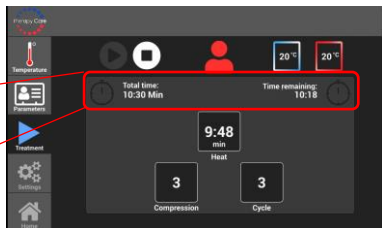
At any time you can change the number of contrasts selected

Total heat time / Remaining heat time

Only if heat only or cold only treatment has been selected.



Total cold time / Remaining cold time



Only if heat only or cold only treatment has been selected.

Tiempo total: 120_{min} **Tiempo restante:** 56:26

The screenshot shows the PVT-1000 Control Panel interface. On the left is a vertical sidebar with icons for Temperature, Patient, Treatment, Settings, and Home. The main display area shows:

- Top status bar: Temperature icon, Play/Pause button, Stop button, Patient icon, and two temperature readouts: -5° and 20°.
- Second row: Total time 65min and Time remaining 64:22.
- Third row: Contrast 1/5, 3 min Cold, and 8:22 min Heat.
- Bottom row: Two large circular buttons labeled '2' (Compression) and '1' (Cycle), both of which are circled in red.

 Red arrows point from the '2' and '1' buttons to the 'Settings' icon in the sidebar.

Active compression level selected

Compression frequency level selected

The compression and frequency selected levels can be modified at any time.

Therapy applying cold

Therapy applying heat

The application of heat (red) or cold (blue) is reflected on the screen by a blinking of the remaining time frame and by the color of the user icon (blue (cold) - red (heat)).

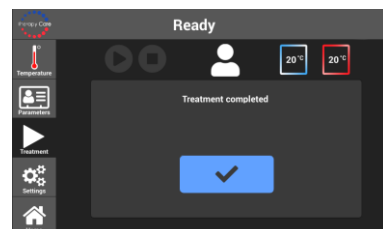
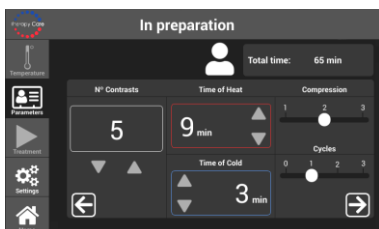
The emptying of exchangers is reflected on the screen by a white flickering of the remaining time frame and by the white color of the user icon.

Go back



Therapy in Preparation / Prepared

Treatment Completed



The device indicates at the top of the screen the current situation.
A continuous beep will indicate that the treatment has ended.

TECHNICAL MODE

Setup menu

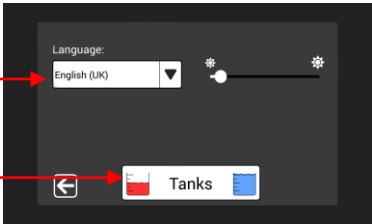
To enter setup menu click on the icon of the gear wheel at the upper left corner of the main screen.

Data that appears on the screen



Modify language

Click on the arrow in the Language window to open a drop-down menu to choose the language.



Deposit recharge and emptying

Click on the "Deposits" window to enter the deposit filling and emptying menu.



TECHNICAL CHARACTERISTICS

Two fluid outlets, to treat up to two treatment zones simultaneously, in one or two users.

Possibilities of treatments to be combined:

- 2 cold zones, (with or without compression)
- 2 hot zones, (with or without compression)
- 2 zones with contrasts, (with or without compression)

Parameters of thermal contrast applications, with or without active hydraulic compression.

- **Contrasts heat / cold, in less than 1 min.**
- Regulation of the number of heat / cold cycles, from 1 to 50 cycles
- Regulation of temperature of hot fluid, from 20 to 45°C
- Regulation of heat application time, from 1 to 59 min.
- Regulation of temperature of cold fluid, from 20°C to -5°C
- Regulation of cold application time, from 1 to 59 min.

Parameters of heat applications, with or without active hydraulic compression:

- Regulation of temperature of hot fluid, from 20 to 45°C
- Regulation of heat application time, from 1 to 59 min.

Parameters of cold applications, with or without active hydraulic compression:

- Regulation of temperature of cold fluid, from 20°C to -5°C
- Regulation of cold application time, from 1 to 59 min.

Regulation parameters of the levels of active hydraulic compression: Levels: 1, 2 and 3

Manual compression therapies help reduce edema, stimulate cellular oxygenation and nutrition of the treated area with increased blood supply and help adapt the exchanger to the treated area by increasing contact.

The equipment offers two modes of regulation of the levels of active hydraulic compression:

Regulation of 3 compression levels: 1, 2, 3 mb	Regulation of 4 frequency levels: 0,1,2,3 sec.
- 1- 40 mb	- 1 – 16 sec.
- 2- 80 mb	- 2 – 24 sec.
- 3- 100 mb	- 3 – 32 sec.

Level 0 hydraulic compression deactivated.

Levels, 1, 2 and 3, different levels of compression and frequency adjustable.

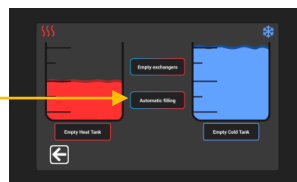
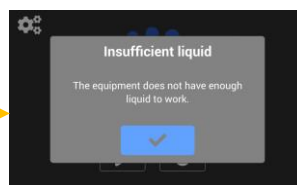
RESOLUTION OF PROBLEMS

Low fluid level alarm / indication:

- Use only the fluid provided by the manufacturer, the use of any other fluid could damage the equipment and void the warranty.
- If at any time the equipment show us the following message on the screen we must proceed to fill the deposits.
- Press the check button.
- Then the filling screen appears.
- Connect the filling tube to the equipment according to the picture.
- Press "Automatic deposit filling".

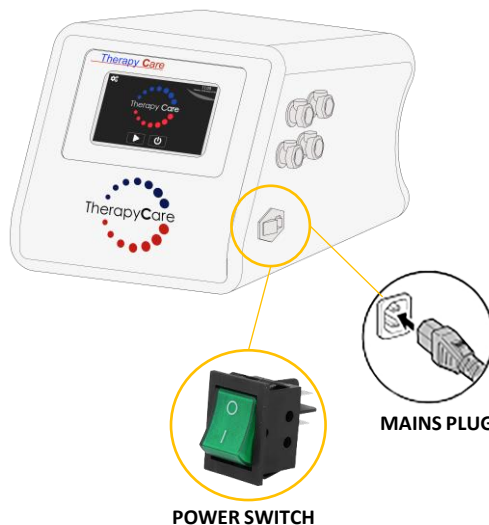
Automatic filling

- The equipment proceed to fill the deposits automatically, until the filling is completed.
- Press the "left arrow" exit button to use the equipment normally.



The equipment does not turn on normally, or when we are going to turn it on, we find that the power switch is previously activated, (green light on), and the equipment do not start, (do not load the program):

- Press on **the power switch** to remove power from the equipment.
- Wait 5 seconds.
- Re-act on **the power switch** and wait for the program to start normally.
- If it still doesn't start.
- Press again on **the switch** to remove power from the equipment.
- Disconnect the plug from the mains.
- Check if there is any fuse that has blown, if so replace it.
- Reconnect the equipment to the mains.
- Proceed to press **the switch** again and wait for the equipment to start normally.
- If the equipment still does not start, call the manufacturer's service technician.

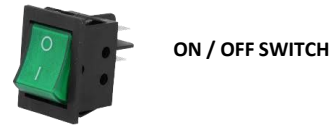
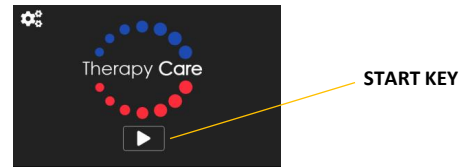


POWER SWITCH

MAINS PLUG

The equipment do not respond to the keys on the screen

- Wait for a few minutes, (without manipulating the equipment), in order to allow the equipment to reset itself and return to normal operation.
- If this does not occur, proceed to disconnect the equipment: by pressing on **the shutdown switch of the equipment**.
- Once the equipment is turned off, leave it off for about 30 seconds and proceed to turn it on.
- If the problem persists or repeats, notify the technical service.



CONTRAINDICATIONS AND PRECAUTIONS

Therapy Care is not a medical device, so that the use of thermal contrast treatments, cold only or heat only for physiotherapy or rehabilitation treatments, must be always carried out under the supervision of qualified personnel.

The exchangers are not sterile, do not place them directly on ulcers, or open wounds

The exchangers for hygiene, will always be applied on a plastic film or disposable bandage.

In any of the following cases it is necessary to request authorization from your doctor:

- Oncological pathology or carrier of a chronic disease in terminal stage.
- Serious circulatory disorders, central or peripheral, the latter with some nuances if the temperature is properly regulated.
- Post acute myocardial infarction, cerebral infarction, atrial fibrillation, heart failure.
- Hypertension, very low blood pressure.
- Open wounds, bleeding.
- Hypersensitivity to cold or heat.
- Pulmonary embolism, pulmonary edema.
- Venous thrombosis, systemic venous hypertension, kidney failure, liver failure, venous insufficiency, cirrhosis.

- People with heart problems, arrhythmias, etc....
- Any acute phase of a disease or exacerbation of a chronic.
- Metal prostheses, anywhere on the body, (we exclude dental pieces).
- Pregnant women.
- People who have been recently operated.
- People who have suffered phlebitis or thrombophlebitis.
- Varicose veins and very advanced varicose veins.

CLEANING AND MAINTENANCE

IMPORTANT: Do not clean the equipment or exchangers with solvents or other aggressive products, as these may damage them.

Equipment cleaning:

To clean the chassis, use only a damp cloth in water.

To clean the screen use some kind of screen cleaning liquid.

Take special care not to hit, press, bend, etc., the screen and especially the Touch panel of the equipment.

Exchangers cleaning:

The exchangers are simply cleaned with a cloth dampened in a soapy solution, or with a disinfectant liquid, (not aggressive).

Preventive maintenance:

The equipment does not require any preventive maintenance to be performed by the user.

An annual review by the service technician is recommended, in order to verify the proper functioning of the equipment and replenish the fluid levels.

Equipment transport:

Whenever you are going to transport the equipment, you must proceed to empty the tanks, follow the instructions in the section "Emptying the deposits"

Replacement fluid:

The replacement of the equipment fluid must be done **solely and exclusively** with the fluid supplied by the manufacturer, the use of any other fluid would invalidate the equipment warranty.

Maintenance contract: The manufacturer has different “Maintenance Contract” options, which would become effective once the equipment warranty has expired. (Check with the manufacturer)

Emptying of deposits:

- Click on the wheels icon located in the part upper left of the main screen.
- Click on the "Deposits" window to enter the menú of filling and emptying of deposits.
- Connect the filling tube to the equipment according to the picture.
- Click on the "Empty Heat Tank" button.

Empty Heat Tank

- The equipment expels the liquid until the heat tank is emptied.
- When you see bubbles coming out of the tube, press the "Cancel" key.

Cancel

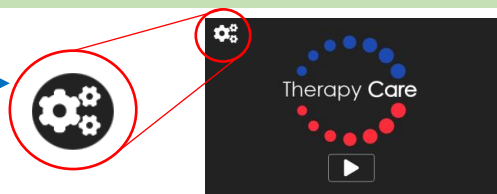
- Click on the "Empty Cold Deposit" button.

Empty Cold Tank

- The equipment expels the liquid until the cold tank is emptied.
- When you see bubbles coming out of the tube, press the "Cancel" key.

Cancel

- Press Exit "Left arrow" to exit the menu.



WARRANTY

This equipment has a one year warranty, both in materials and workmanship, for any manufacturing defect. The warranty does not include breakdowns caused by misuse of the equipment.

The use of a fluid other than that provided by the manufacturer will void the warranty for all purposes.

MANUFACTURER AND TECHNICAL SERVICE

The equipment can only be repaired by the Official Technical Service.
The user must not attempt to repair any malfunction by himself.

Manufacturer and technical service:

ARB Systems Proyectos Electrónicos SL
C/ Pico de la Sierrona, 135
28400 Collado Villalba
Madrid

Tlf. +34 918.287.364
Email: arb-systems@arb-systems.com

CONTACT

Our team will be happy to answer your calls or answer your e-mails.
Do not hesitate to contact us and we can give you more detail about any of your questions.
Tlf. +34 918.287.364
Email: arb-systems@arb-systems.com



DATA SHEET

Manufacturer: ARB Systems Proyectos Electrónicos S.L. - CIF. B 84931070

Brand: ARB

- Model: Therapy Care

Supply voltage: 115 / 230 V

- Frequency: 50 / 60 HZ,

(The equipment is factory set for the voltage and frequency of use).

Maximum power: 1. 600 W.

- Maximum consumption: 7 A.

Control and programming module

- Thermostat module

Thermal protection through internal safety thermostats.

Digital temperature control (Digital temperature and safety sensors).

Pressure sensors in each of the hydraulic circuits.

Digital level sensors

User Interface: Touch screen

Treatment Counter

Low fluid level indicator

Temperature exchangers adaptable to each of the areas to be treated.

Polystyrene (PS) chassis, (meets flammability standard: UL 94)

The circulating fluid meets standards: UNE 26361 88, INTA157 413, BRITISH STANDART 6580, among others ...

Dimensions and weight:

- Dimensions: Width: 38 cm; High: 36 cm; Depth: 60 cm

- Weight: 33Kgr.

The equipment for installation only needs a power outlet.

CE marking

Meets the following rules and directives:

SECURITY:

UNE EN 60335– 1:2002 + UNE EN 60335 – 2 – 23:2004

ELECTROMAGNETIC COMPATIBILITY:

EN 61000-6-1 (20079 + EN 61000-6-3(2007)

And conforms to directives 2006/95/CE (low voltage) Y 2004/108/CE (EMC)

DECLARATION OF CONFORMITY



DECLARACIÓN DE CONFORMIDAD

Equipo: Therapy Care:

El que suscribe: ARB Systems Proyectos Electrónicos SL, con CIF. B.84931070, con domicilio social en c/ Pico de la Sierrona, 135, de Villalba 28400 Madrid.

Y en su nombre: D. Alberto Ramírez Barrones, como representante legal de la misma.

DECLARA, bajo su responsabilidad que:

El equipo fabricado por: ARB Systems Proyectos Electrónicos SL

En Santa Oliva, Tarragona

Marca: ARB Systems

Modelo: Therapy Care

- Cumple las siguientes normas y directivas:

- **SEGURIDAD:**

- UNE EN 60335- 1:2012/A12:2017 + UNE EN 60335 - 2 - 23:2004/A2 :2015

- **COMPATIBILIDAD ELECTROMAGNÉTICA:**

- EN 61000-6-1 :2007 + EN61000-6-3:2007

- Y es conforme a las directivas 2006/95/CE (baja tensión) Y 2004/108/CE (EMC)

En Madrid a 20 de marzo de 2019

Alberto Ramírez Barrones
Director Gerente